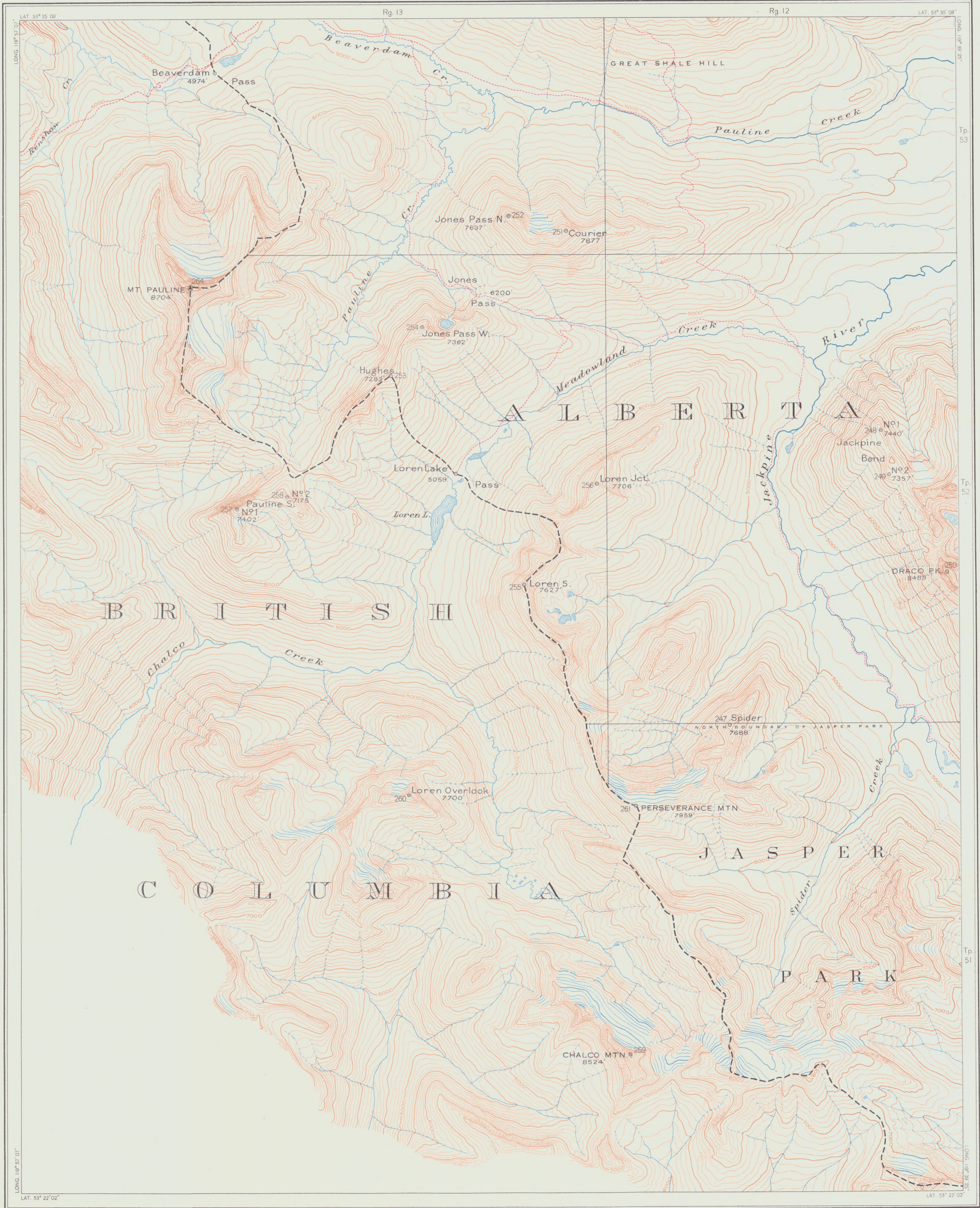
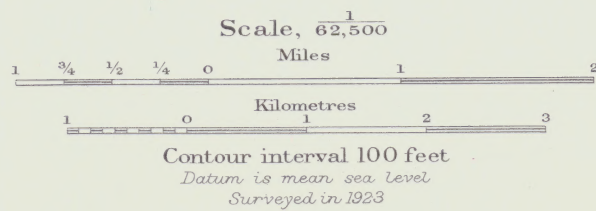


INTERPROVINCIAL BOUNDARY COMMISSION
BOUNDARY BETWEEN ALBERTA AND BRITISH COLUMBIA

SHEET N°35



- REFERENCES**
- Triangulation Stations (Geodetic Survey)
 - Camera Stations
 - Roads
 - Trails
 - Morainal detritus and Rockfalls
 - Boundary along natural line of Watershed
 - Boundary marked by the Commission



R. W. CAUTLEY, D.L.S.

A. O. WHEELER, B.C.L.S.

Commissioner for the Dominion
 Commissioner for Alberta
 Commissioner for British Columbia

MAP COLLECTION
 UNIVERSITY OF ALBERTA
 EDMONTON, ALBERTA
 CANADA

DRAWN AND PRINTED BY THE TOPOGRAPHICAL SURVEY OF CANADA OTTAWA